



**REGIONAL SPECIALISED METEOROLOGICAL CENTRE-TROPICAL CYCLONES, NEW DELHI
TROPICAL WEATHER OUTLOOK**

DEMS-RSMC SPECIAL TROPICAL CYCLONES NEW DELHI DATED 07.08.2022

TROPICAL WEATHER OUTLOOK FOR NORTH INDIAN OCEAN (THE BAY OF BENGAL AND ARABIAN SEA) VALID FOR NEXT 120 HOURS ISSUED AT 0600 UTC OF 07.08.2022 BASED ON 0300 UTC OF 07.08.2022.

BAY OF BENGAL:

UNDER THE INFLUENCE OF A CYCLONIC CIRCULATION OVER NORTHWEST BAY OF BENGAL AND NEIGHBOURHOOD, A LOW PRESSURE AREA FORMED OVER NORTHWEST BAY OF BENGAL OFF ODISHA-WEST BENGAL COASTS AT 1200 UTC OF YESTERDAY, THE 6TH AUGUST, 2022. IT LAY AS A WELL MARKED LOW PRESSURE AREA OVER NORTHWEST BAY OF BENGAL & ADJOINING WESTCENTRAL BAY OF BENGAL OFF SOUTH ODISHA & ADJOINING NORTH ANDHRA PRADESH COASTS AT 0300 UTC OF TODAY, THE 7TH AUGUST, 2022.

IT IS LIKELY TO INTENSIFY INTO A DEPRESSION OVER THE SAME REGION DURING NEXT 48 HOURS AND MOVE GRADUALLY WEST-NORTHWESTWARDS ACROSS ODISHA AND CHATTISGARH.

CONVECTION ASSOCIATION WITH THE WELL MARKED LOW PRESSURE AREA IS SCATTERED TO BROKEN LOW AND MEDIUM CLOUDS WITH EMBEDDED INTENSE TO VERY INTENSE CONVECTION OVER NORTHWEST BAY OF BENGAL, ODISHA & NEIGHBORHOOD. MINIMUM CLOUD TOP TEMPERATURE IS MINUS 93 DEG C.

SCATTERED TO BROKEN LOW AND MEDIUM CLOUDS WITH EMBEDDED INTENSE TO VERY INTENSE CONVECTION LAY OVER BAY OF BENGAL, ANDAMAN SEA, ARAKAN COAST, GULF OF MARTABAN AND TENASSERIM COAST.

PROBABILITY OF CYCLOGENESIS (FORMATION OF DEPRESSION) DURING NEXT 120 HRS:

24 HOURS	24-48 HOURS	48-72 HOURS	72-96 HOURS	96-120 HOURS
LOW	MODERATE	MODERATE	NIL	NIL

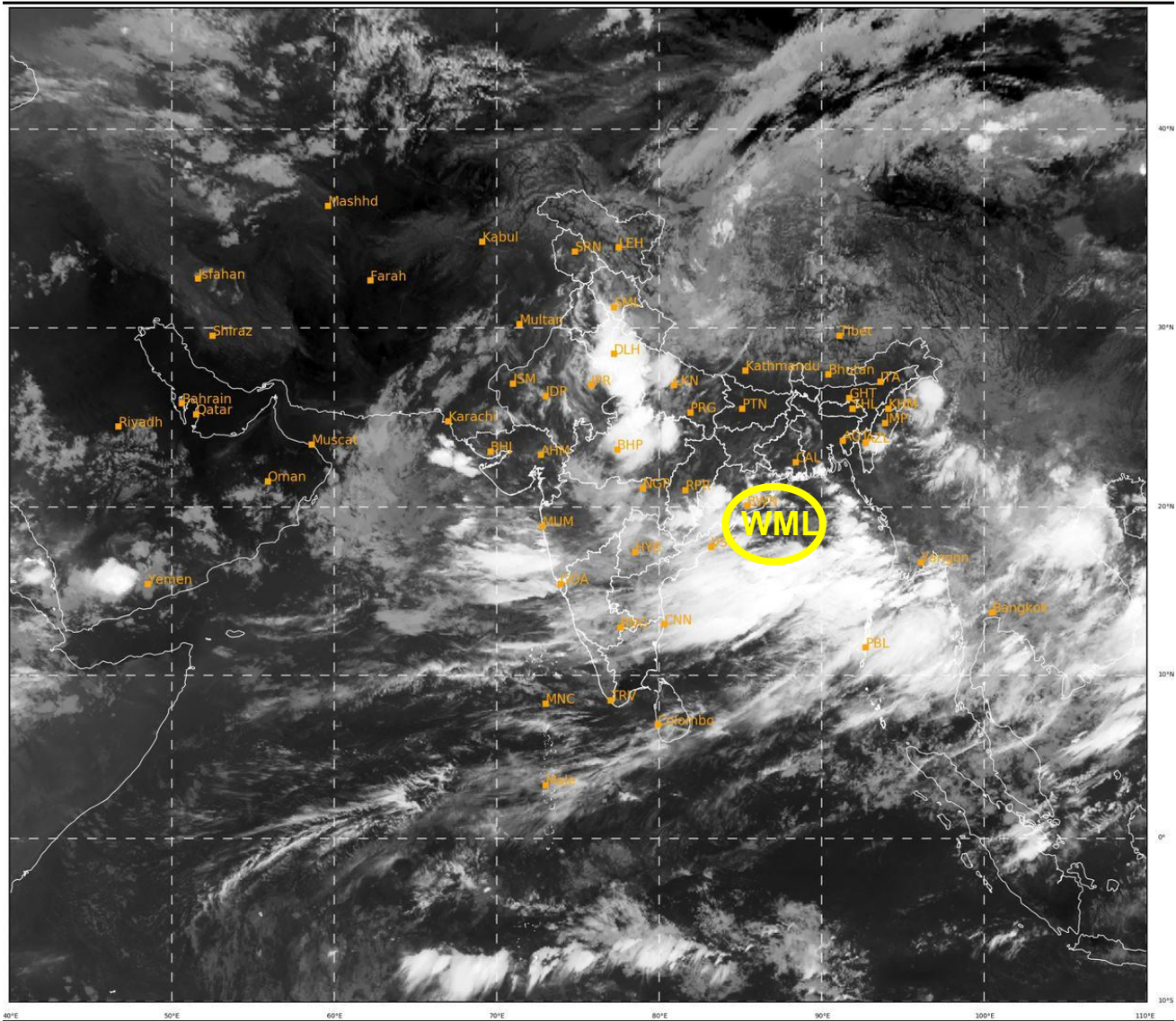
ARABIAN SEA:

SCATTERED TO BROKEN LOW AND MEDIUM CLOUDS WITH EMBEDDED INTENSE TO VERY INTENSE CONVECTION OVER NORTHEAST & EASTCENTRAL ARABIAN SEA. SCATTERED LOW AND MEDIUM CLOUDS WITH EMBEDDED MODERATE TO INTENSE CONVECTION OVER REST OF ARABIAN SEA, LAKSHADWEEP ISLANDS AREA & COMORIN AREA.

PROBABILITY OF CYCLOGENESIS (FORMATION OF DEPRESSION) DURING NEXT 120 HRS:

24 HOURS	24-48 HOURS	48-72 HOURS	72-96 HOURS	96-120 HOURS
NIL	NIL	NIL	NIL	NIL

Cloud distribution: (a) Isolated: <25%, Scattered:25-50%, Broken: 51-75%, Solid:>75%, Convection Intensity: (a) Weak: Cloud Top Temperature (CTT) >-25°C, (b) Moderate: CTT: - 25°C to -40°C, (c) Intense: CTT: - 41°C to -70°C and (d) Very Intense: : Less than -70°C
PROBABILITY OF CYCLOGENESIS (FORMATION OF DEPRESSION): NIL: 0%, LOW: 1-33%, , MODERATE: 34-66% AND HIGH: 67-100%
This is a guidance Bulletin for WMO/ESCAP Panel Member countries. Visit respective National websites for Country specific Bulletins



422

942

IMD,DELHI

WML: WELL MARKED LOW PRESSURE AREA